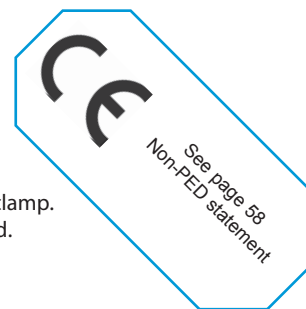


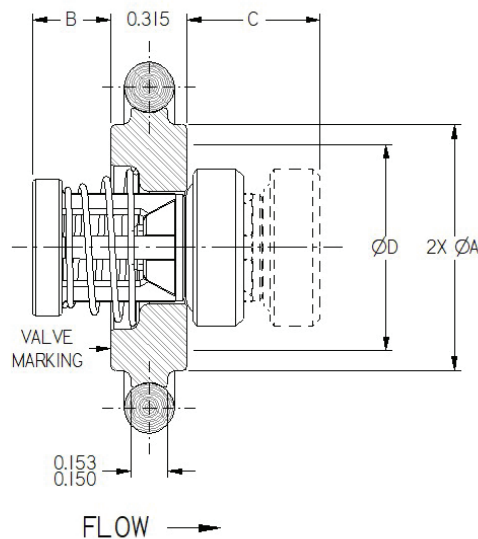
Valve shown with flanges and clamp.
Flanges and clamp not included.



The **Vacuum Flange Insert (VI)** valve is designed to fit between ISO/NW/KF/QF vacuum flanges designed in accordance with DIN 28403, DIN 28404, ISO 1609, and ISO 2861. It is both a centering ring and a check valve. The compact design requires no additional space in the line. Its size makes it extremely economical when compared to full-bodied valves.

The VI valve can also be used as a low pressure relief valve under either positive or vacuum conditions by using the desired spring setting.

NOTE: USP Class VI o-rings can be supplied with certification.



DN	Size Code	DIM A	DIM B	DIM C ^①	DIM D ^②	ORIFICE DIAMETER
16	F	0.665-0.669	0.31	0.52	0.62	0.348
25	H	1.020-1.023	0.35	0.57	0.87	0.464
40	J	1.611-1.614	0.67	0.82	1.37	0.890
50	K	2.044-2.047	0.87	1.00	1.87	1.135

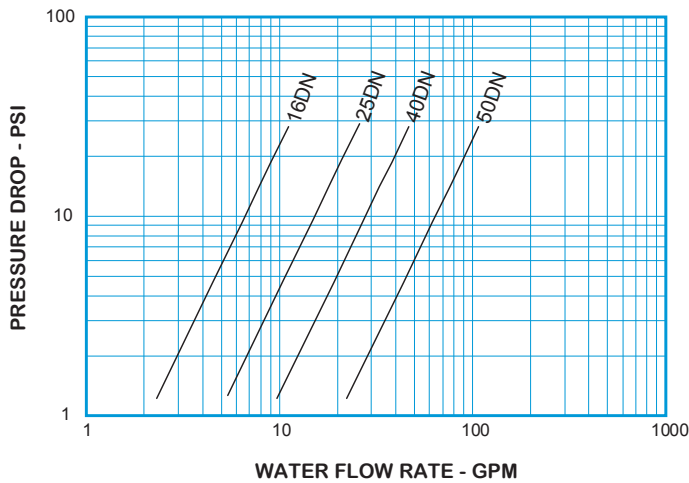
^① Maximum nominal dimension for fully open valve with no spring.

^② Minimum recommended flange ID

DN	SIZE CODE	STYLE NUMBERS 316 SS ^③	NON-SHOCK PRESSURE-TEMPERATURE RATING	OUTSIDE O-RING SIZE
16	F	VIFSS	FULL VACUUM-ATMOSPHERIC @ 100°F	314
25	H	VIHSS		320
40	J	VIJSS		326
50	K	VIKSS		330

^③ See page 56 for material grade information.

Vacuum Flange Insert Valve For Water at 72°F



Note: All flow curves and Cv values presume the valves are fully open with 1/2 PSI cracking pressure springs. Consult the factory for more information.

STYLE VI C _v VALUES & VALVE WEIGHTS		
C _v	SIZE	316 SS
2.4	16	0.7 oz.
4.6	25	1.6 oz.
9.5	40	4.1 oz.
20.9	50	7.0 oz.

See page 51 for Flow Formulae.
Valve weights are approximate.

HOW TO ORDER CHECK-ALL STYLE VI

BODY MATERIAL
316/316L SS = SS
See p. 3 for temperature rating

SPRING CRACKING PRESSURES (PSI)
Must use decimal as a character unless selecting NO SPRING. Specify Exact Setting

SPRING RANGES	EXAMPLE
.000 TO .999	= .500
1.00 TO 9.99	= 1.50
10.0 TO 85.0	= 15.0
NO SPRING	= NOSPRG

STANDARD CRACKING PRESSURES ①
.125 .500 1.50 3.50
(Sizes D-J Only)

Note: Many other cracking pressures are available. All spring tolerances +/- 15%.

VALVE STYLE

SIZE

16	= F
25	= H
40	= J
50	= K

SEAT & OUTER SEAL MATERIAL

AFLAS® = AS	USP CLASS VI AFLAS® = UA
BUNA-N = BN	USP CLASS VI EPDM = UE
EPDM = EP	USP CLASS VI SILICONE = US
KALREZ® = KZ	USP CLASS VI VITON™ = UV
NEOPRENE = N	
VITON™ = VT	

See p. 3 for temperature ratings

SPECIAL OPTIONS

T = FEP ENCAPSULATED SPRING
See pages 3 & 4 for temperature rating
Contact the factory for more options

SPRING MATERIAL

316 SS	= SS
ALLOY C-276	= HC
ALLOY B	= HB
INCONEL® X750 OR ALLOY X750	= IX
MONEL® 400	= MO
17-7PH SS	= PH
TITANIUM	= TI

See p. 4 for temperature ratings

Listed above are the most common material selections. Please contact the factory for additional options.

① .500 PSI is the only standard cracking pressure for spring materials other than Stainless Steel. .125 PSI springs are not recommended for installations with flow vertical down.

www.checkall.com

sales@checkall.com

ISO 9001 CERTIFIED

MADE IN USA 2019

Page information references listed on this cut sheet are available in the printed catalog as well as the digital catalog, which is available at www.checkall.com.

MONEL® - Special Metals Family of Companies
KALREZ® - E.I. du Pont de Nemours and Company

Trademarks Used
INCONEL® - Special Metals Family of Companies
VITON™ - The Chemours Company FC LLC

TRI-CLAMP® - Alfa Laval Inc.
AFLAS® - AGC, Inc.