



SPRING-LOADED CHECK VALVES



INSERT SERIES



F1 Series

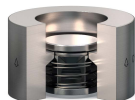


FP Series (PTFE)

FLANGE INSERT

- Installs between ANSI flanges¹
- B16.34 certification and marking available on most models

SERIES	SIZE	BODY MATERIALS ²	PRESSURE RATING ³	PIPE SCHEDULE
F1 Series	1/2" - 20"	Alloys & Superalloys	Class 150 & 300	Sch. 40 Metal
F6 Series	1/2" - 4"	Alloys & Superalloys	Class 150, 300 & 600	Sch. 80 Metal
FP Series	1/2" - 6"	PTFE & PVC	up to 200 psi	Sch. 40 & 80 Metal



WV Series

WAFFER INSERT

- Installs between ANSI flanges¹
- API 594 and/or B16.34 certification and marking available on most models

SERIES	SIZE	BODY MATERIALS ²	PRESSURE RATING ³
WV Series	1/2" - 2"	Alloys & Superalloys	Class 150 - 2,500



UV Series

UNION INSERT

- Installs into most standard, and hammer type schedule 40 ground joint unions¹

SERIES	SIZE	BODY MATERIALS ²	PRESSURE RATING ³
UV Series	1/2" - 2"	Alloys & Superalloys	up to 3,000 psi



VI Series

VACUUM INSERT

- Installs between vacuum flanges¹
- Acts as both a check valve and a centering ring

SERIES	SIZE	BODY MATERIALS ²	PRESSURE RATING ³
VI Series	DN16, 25, 40, & 50	Alloys & Superalloys	Full vacuum



LP Series

FLANGE INSERT FOR LINED PIPE

- Installs between flanges on lined pipe systems¹
- Standard spring is alloy C-276

SERIES	SIZE	BODY MATERIALS ²	PRESSURE RATING ³
LP Series	1" - 3"	Alloy C-276 & PTFE	contact sales

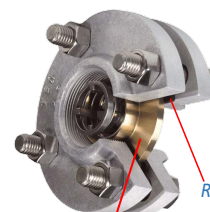


SI Series

STRAIGHT SIDED INSERT

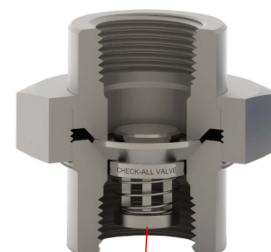
- Designed to be installed into a threadless cavity where a check valve is required

SERIES	SIZE	BODY MATERIALS ²	PRESSURE RATING ³
SI Series	1/2" - 2"	Alloys & Superalloys	up to 3,000 psi



FL Series
(shown between flanges)

Requires 2 flange gaskets



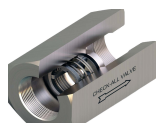
UV Series
(shown inside union)

Insert series valves may not be visible after installation, contact sales for valve identification tags

THREADED SERIES



U3 Series



U1 Series

FEMALE THREADS

SERIES	DESCRIPTION	SIZE	BODY MATERIALS ²	PRESSURE RATING ³
U3 Series	FNPT	3/8" - 4"	Alloys & Superalloys	up to 3,000 psi
U1 Series	High Pressure FNPT	3/8" - 1-1/2"	Alloys & Superalloys	up to 10,000 psi



CN Series

MALE THREADS

SERIES	DESCRIPTION	SIZE	BODY MATERIALS ²	PRESSURE RATING ³
CN Series	MNPT x MNPT	1/2" - 4"	Alloys & Superalloys	up to 3,000 psi



AM Series



AF Series

ADAPTER (SAME SIZE INLET & OUTLET)

SERIES	DESCRIPTION	SIZE	BODY MATERIALS ²	PRESSURE RATING ³
AM Series	MNPT x FNPT	1/2" - 4"	Alloys & Superalloys	up to 3,000 psi
AF Series	FNPT x MNPT	1/2" - 4"	Alloys & Superalloys	up to 3,000 psi



BU Series

BUSHING (INCREASER)

SERIES	DESCRIPTION	SIZE	BODY MATERIALS ²	PRESSURE RATING ³
BU Series	FNPT x MNPT	1/2" x 3/8" - 3" x 2-1/2"	Alloys & Superalloys	up to 3,000 psi



Mini Series

MINI-CHECK

SERIES	DESCRIPTION	SIZE	BODY MATERIALS ²	PRESSURE RATING ³
M Series	MNPT, FNPT, Tubing	1/8" - 3/8"	Alloys & Superalloys	up to 5,000 psi

ISO 7 "R" and "Rp" threads available on select series

¹ Flanges, unions, and ferrules not included • ² See back page for complete list of material options • ³ Pressure ratings vary by valve series, size, and material

TUBING SERIES

COMPRESSION AND FLARED

- Three piece body machined from bar stock with compression or 37° flare fittings

SERIES	DESCRIPTION	SIZE	BODY MATERIALS ²	PRESSURE RATING ³
TV Series	Compression	1/8" - 2"	Alloys	Up to 7,700 psi
TF Series	37° Flare	1/8" - 2"	Alloys	Up to 7,700 psi



FLANGED SERIES

FLANGED BODY

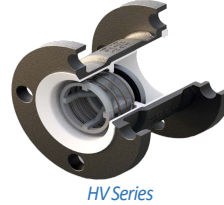
- One piece body with ANSI/ASME B16.5 Class 150 flanged ends

SERIES	SIZE	BODY MATERIALS ²	PRESSURE RATING ³
HV Series	1" - 10"	316 Stainless & Carbon Steel	Class 150

PTFE LINED FLANGED BODY

- One piece carbon body with ANSI/ASME B16.5 Class 150 flanged ends
- Single piece, virgin PTFE lining machined to a minimum thickness of 3/32"

SERIES	SIZE	BODY MATERIALS ²	PRESSURE RATING ³
HT Series	1" - 2"	Carbon Steel	Up to 55 psi



WELDED SERIES

SOCKET AND BUTT WELD

- One piece body machined from bar stock

SERIES	DESCRIPTION	SIZE	BODY MATERIALS ²	PRESSURE RATING ³
US Series	Socket Weld	1/4" - 4"	Alloys & Superalloys	Up to 5,000 psi
B4 Series	Sch. 40 Butt Weld	1/4" - 4"	Alloys & Superalloys	Up to 5,000 psi
B8 Series	Sch. 80 Butt Weld	1/4" - 4"	Alloys & Superalloys	Up to 5,000 psi



SANITARY INSERT

3-A SANITARY INSERT

- Patented design installs between sanitary ferrules¹, sealing on the ID of the ferrules
- 32 Ra electropolished standard internal finish, finer finish available
- Designed for quick disassembly, repair and cleaning
- Uses 3-A and USP Class VI seat and outer o-rings

SERIES	SIZE	BODY MATERIALS ²	PRESSURE RATING ³
3S Series	1" - 4"	Electropolished 316 Stainless	Up to 1,000 psi



SANITARY CARTRIDGE

- Compact design installs between sanitary ferrules¹, sealing on the ID of the ferrules
- Uses FDA and USP Class VI seat and outer o-rings

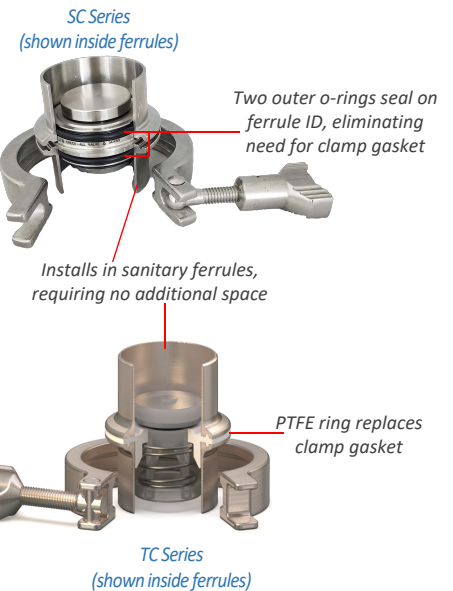
SERIES	SIZE	BODY MATERIALS ²	PRESSURE RATING ³
SC Series	3/4" - 4"	316 Stainless & Alloy C-276	Up to 1,000 psi



SANITARY INSERT

- Compact design installs between sanitary ferrules¹ with outer PTFE ring replacing the clamp gasket
- Uses FDA & USP Class VI seat and outer o-rings

SERIES	SIZE	BODY MATERIALS ²	PRESSURE RATING ³
TC Series	3/4"	PTFE	Up to 55 psi



CUSTOM CHECK VALVES

For those truly unique applications with unusual configurations or connections, our engineering team is here to help design a custom valve specific to your needs. Whether it's a small change to a standard valve design or a completely custom design, our engineering and production teams can help you minimize

- ASME B16.5 RTJ Flange Connection
- SAE J518 Code 61 & 62 Flange Connection
- DIN Flange Connection
- AWWA C-606 Grooved Connection
- Press Connection
- Cartridge Valve (Outer O-Ring Seal)
- SAE J1926-1 Threaded Connection
- ASME B1.20.3 Dryseal Threaded Connection
- API 5CT Threaded Connection
- MIL MS33649 & MS16142 Threaded Connection
- ISO 6149-1 Metric Threaded Connection



¹ Flanges, unions, and ferrules not included . ² See back page for complete list of material options . ³ Pressure ratings vary by valve series, size, and material

MATERIAL OPTIONS

BODY MATERIALS¹

Alloys	Superalloys	Plastics
316 Stainless	Alloy 20	PTFE
Brass	Alloy B ²	PVC
Carbon Steel	Alloy C-276	
	Monel® 400	
	Titanium ²	

¹Body material options vary by valve series

²Subject to availability at the time of request

SEAT MATERIALS³

Standard	Non-Standard
Buna-N	Aflas®
EPDM	Fluorez® (FFKM)
Metal	Kalrez® (FFKM)
FKM	
PTFE	
Neoprene	
Silicone	

³FDA, 3-A, & USP Class VI options available

SPRING MATERIALS⁴

Standard	Non-Standard
316 Stainless ⁵	17-7PH Stainless
	Alloy B
	Alloy C-276
	Alloy X-750 (Inconel®)
	Monel® 400
	Titanium

⁴FEP encapsulation available on select valves

⁵Standard spring material and cracking pressure may vary by valve series and body material

Other material options may be available, contact sales for more information

CERTIFICATIONS & STANDARDS

ISO 9001

International quality standard -- Certificate FM 40858 issued by The British Standards Institute

3-A Sanitary Standard

The Check-All® 3S Series is compliant with 3-A Sanitary Standards for Vacuum Breakers and Check Valves

B16.34 Certification

Many Check-All® valves can be supplied with B16.34 certification

CE (PED 2014/68/EU) Conformance

Many Check-All® products can conform to the Pressure Equipment Directive (PED 2014/68/EU)

NACE Standards

Check-All® can supply valves that conform to the requirements of NACE MR0175/ISO 15156 and NACE MR0103/ISO 17495-1

Canadian Registration Number

Many Check-All® products are registered for use in pressure applications -- CRN 0C16301.2CL

Additional testing and/or markings may be required, consult the factory for more information

DID YOU KNOW

Because of the unique design of our spring-loaded check valves, when sized correctly, can also be used as a low pressure or vacuum relief valve.

Contact sales for sizing assistance.

TRADEMARKS USED IN THIS CATALOG



- Administered by 3-A SSI

AFLAS® - AGC, Inc.

FLUOREZ® - Fluorez Technology Ltd.

INCONEL® - Special Metals Family of Companies

KALREZ® - E.I. du Pont de Nemours and Company

MONEL® - Special Metals Family of Companies



MADE IN USA



(515) 224-2301



CHECK-ALL® VALVE MFG

sales@checkall.com



www.checkall.com



ISO 9001 CERTIFIED

CONDENSED-2024