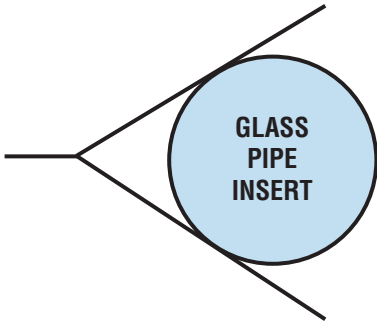




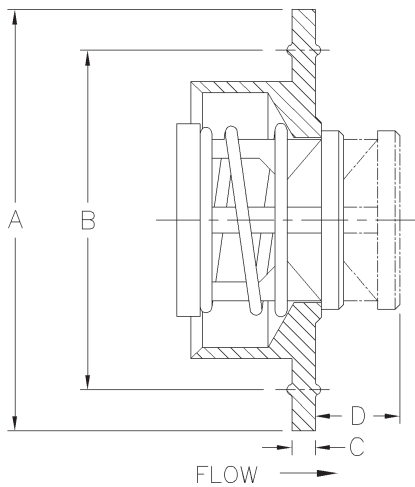
See PED statement below



The **Glass Pipe Insert** is an all fluoropolymer (PTFE/FEP/PFA) check valve with a FEP encapsulated spring. The valve is designed to replace the gasket normally used with glass pipe connecting flanges (Flanges not included). It is inserted into one end of the glass pipe and the flange bolts are tightened. No extra pipe or fittings are necessary to install a GPI in the line.

The valve works equally well in any position with proper spring selection, which facilitates installing a check valve anywhere in the system.

**PED Conformance Statement:** Due to the unique design of the Glass Pipe Insert, this series is not considered a pressure vessel but rather a gasket. According to PED Guideline 1/8, gaskets are not governed by the Pressure Equipment Directive. As a result, the GPI series is available for sale in the European Community and no CE Mark is required.



Nom. Pipe Size	Size Code	A	B	C	D ①	Orifice ② Diameter
1	H	1-5/8	1.280	0.13	0.73	0.593
1-1/2	J	2-1/4	1.812	0.13	0.86	0.890
2	K	2-3/4	2.312	0.13	0.90	1.135
3	M	3-7/8	3.390	0.14	1.49	2.025
4	N	5-11/32	4.420	0.14	1.90	2.550

① Maximum nominal dimension for a fully open valve with no spring.

② Due to molding process, orifice may vary.

Body Material ③	Nominal Pipe Size	Non-Shock Pressure Rating ④
PTFE (TF)	1 - 2	55 PSIG @ 100°F
	3 - 4	20 PSIG @ 100°F

③ See page 50 for material grade information.

④ Consult the factory for reduced P-T rating of PTFE valves above 100°F.

